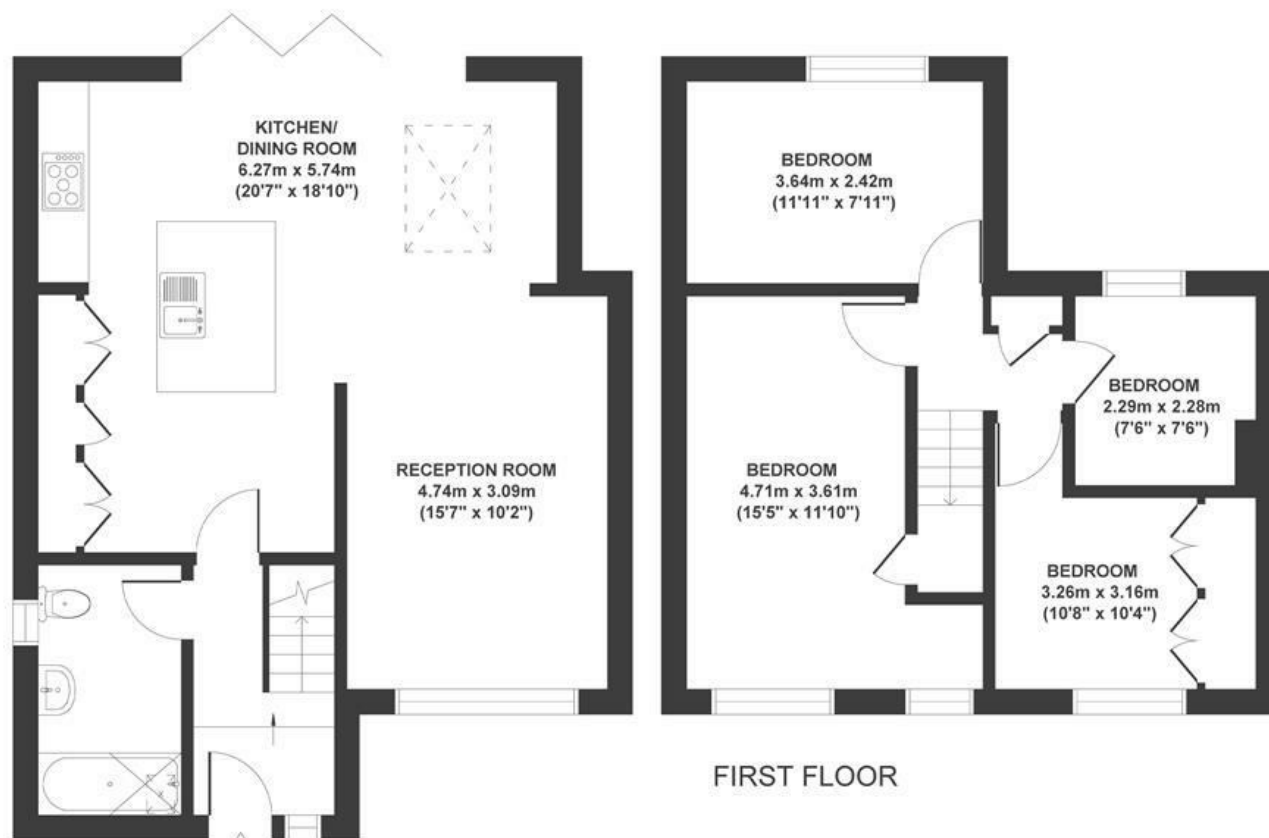


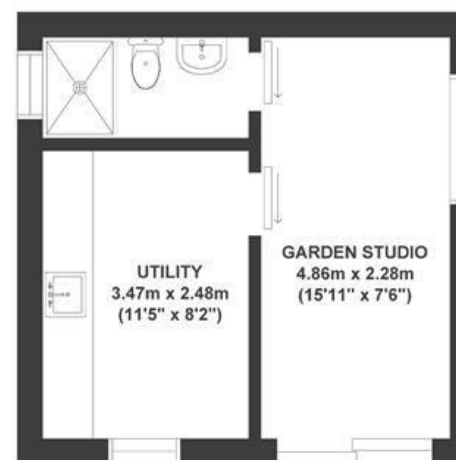
Greenleaze

KNOWLE

APPROXIMATE FLOOR AREA
120 SQM / 1295 SQFT



GROUND FLOOR



OUTBUILDING

Boardwalk

Greenleaze

, BRISTOL



£425,000



BS4 2TJ



4 Bedrooms



1 Bathrooms

" We've loved the home we've created over the last 10 years, the sense of open space both inside and out, whether hosting friends and family for special occasions or spending long summer evenings in the garden making homemade pizzas together, watching the balloons glide overhead. Visits to Redcatch Community Garden have become part of our weekly rhythm. It's a home that's given us many memories, and we hope it brings the same happiness to whoever lives here next "

